

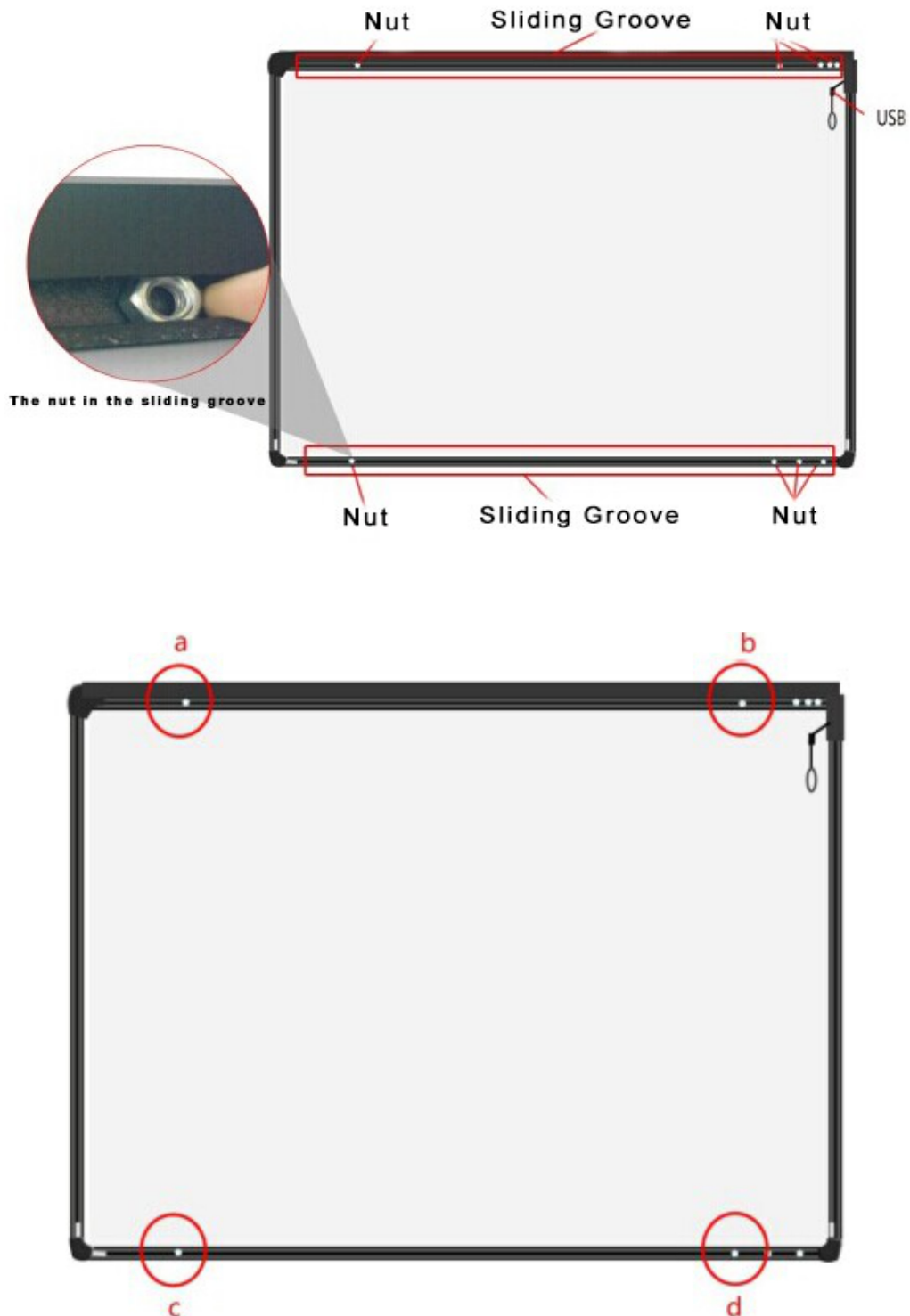
einsboard



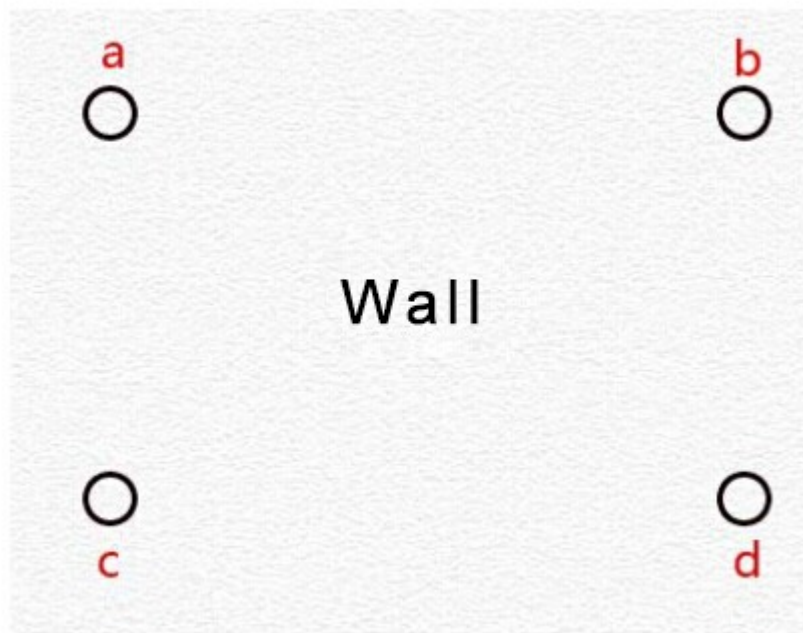
Installing einsboard

There are 4 nuts provided in the sliding channel in the back of the board, 2 nuts in the top channel and 2 in bottom channel.

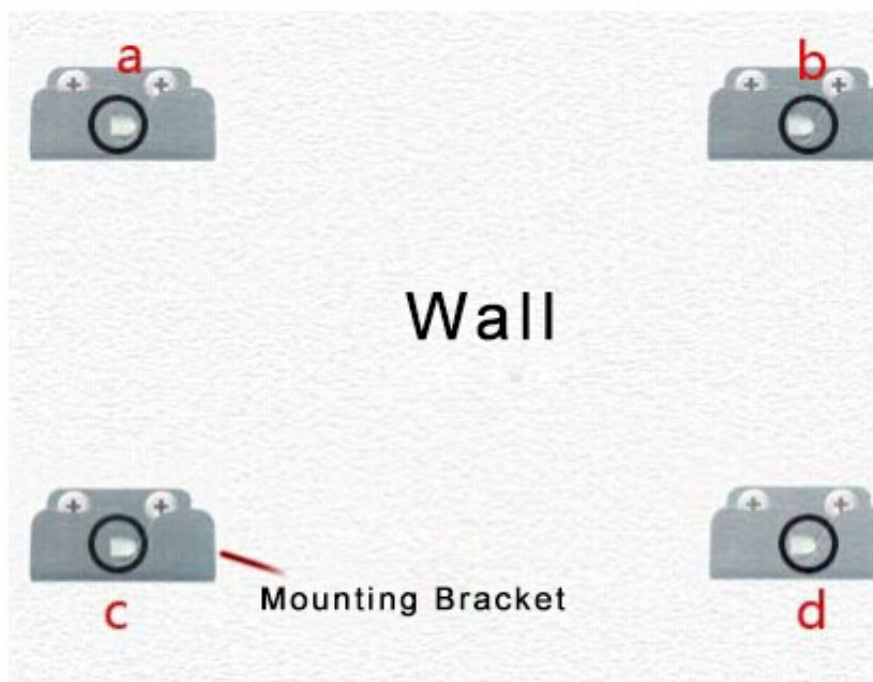
These nuts are sliding and can be adjusted to adjust the board horizontally, once its is mounted on the clamps.



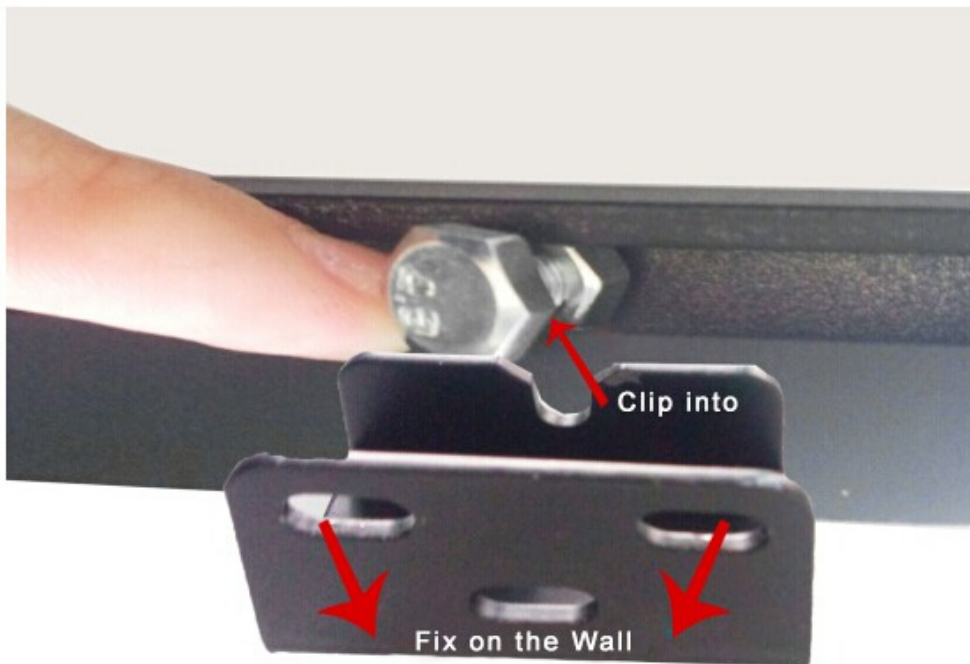
Step1: Mark the Hole positions on the wall (at least 4 points)



Step 2: Drill holes and fix the mounting brackets on the wall accordingly.



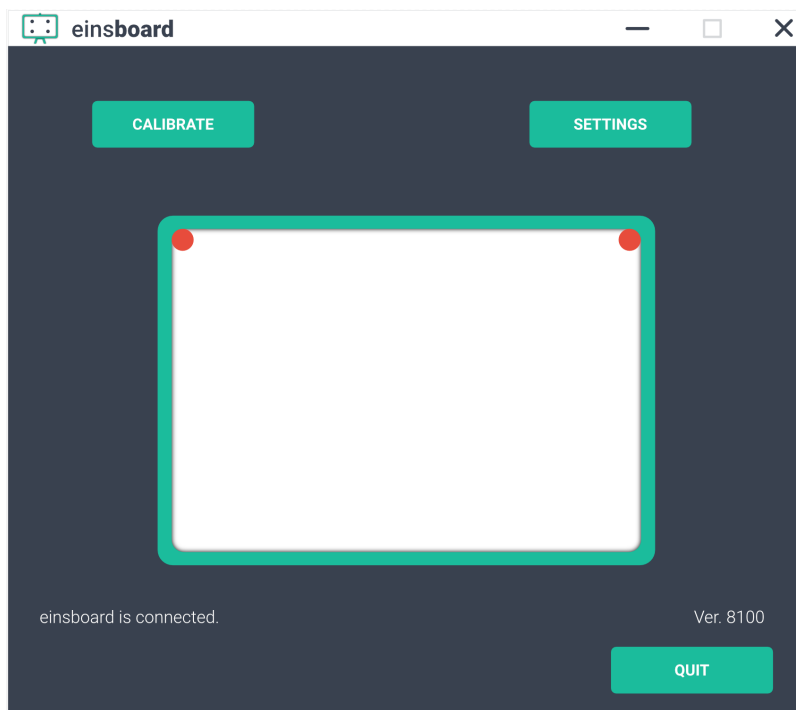
Step3: Fix the Screw in the Nut given in sliding channel



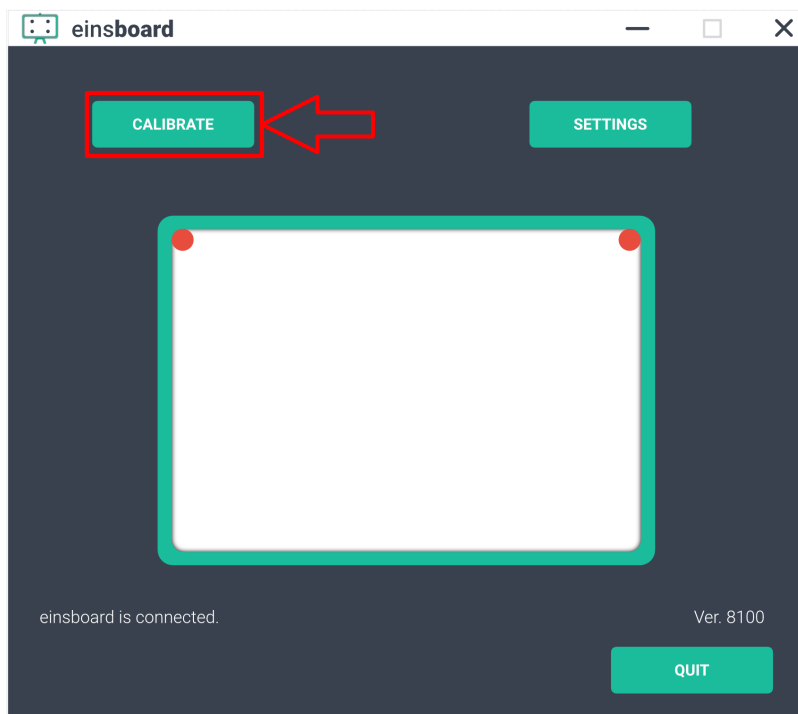
Step4: Mount the board on the clamps.

Calibrating einsboard


Step 1: Run einsboard calibration tool. Desktop>einsboard.



Step 2: Click on Calibrate.



Step 3: Touch the Center of cross with finger. And follow it to complete for all 16 positions. Your einsboard is calibrated to be used with finger.

 Touch the center of Cross with Finger and Follow the same for All 16 positions

To provide calibration samples, tap the crosshair each time that it appears on the screen.

Right-click anywhere on the screen to return to the last calibration point. Press the Esc button to close the tool. Do not change your screen orientation until you have completed the calibration process.